

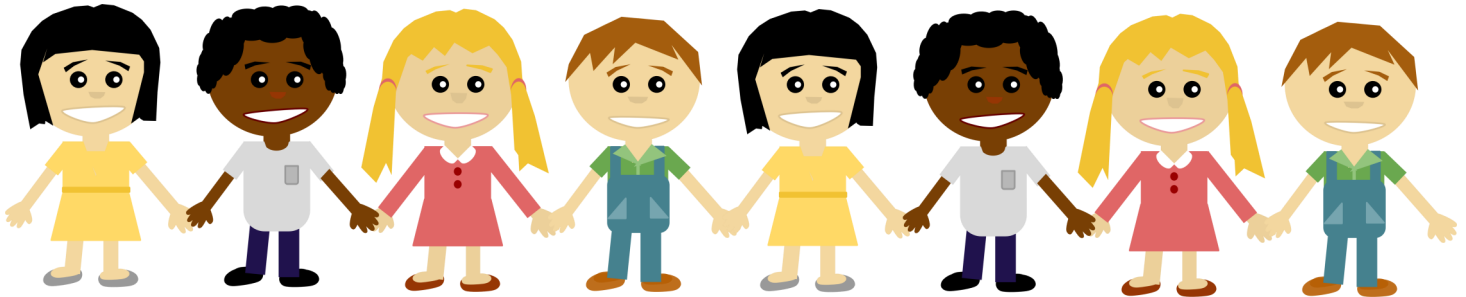
Carlisle County



University of Kentucky
College of Agriculture,
Food and Environment
Cooperative Extension Service

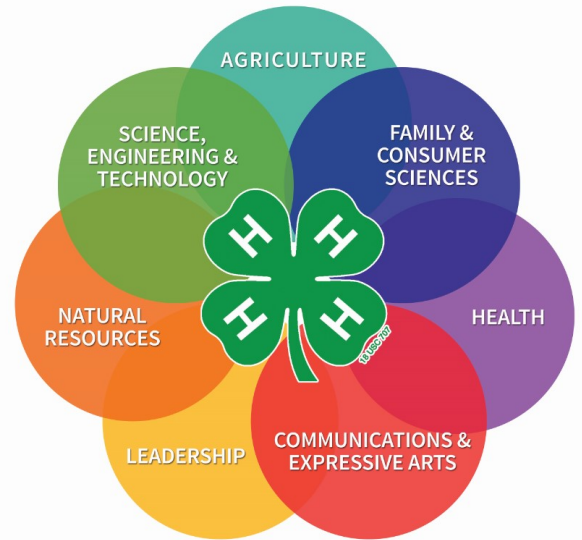
4-H Cloverbud Club

Make a fun and nutritional snack each day!
Explore the seven curriculum areas of 4-H listed below through hands-on activities!
Learn about good character and citizenship!



CLUB DATES
SEPTEMBER 23
OCTOBER 28
NOVEMBER 25

JANUARY 27
FEBRUARY 24
MARCH 23
APRIL 27



3:30-4:30 PM EACH DAY

GRADES K-3/CLUB DUES: \$7 PER CHILD/CARLISLE CO. EXTENSION OFFICE

Call 270-628-5458 to sign up by September 16 / Maximum 25 youth
Please return all enrollment forms to the Carlisle County Extension Office, 65 John Roberts Drive, Bardwell to Kelsey Chadwick, 4-H Youth Development Agent.

Cooperative Extension Service
Agriculture and Natural Resources
Family and Consumer Sciences
4-H Youth Development
Community and Economic Development

Educational programs of Kentucky Cooperative Extension serve all people regardless of economic or social status and will not discriminate on the basis of race, color, ethnic origin, national origin, creed, religion, political belief, sex, sexual orientation, gender identity, gender expression, pregnancy, marital status, genetic information, age, veteran status, or physical or mental disability. University of Kentucky, Kentucky State University, U.S. Department of Agriculture, and Kentucky Counties, Cooperating.
LEXINGTON, KY 40546



Disabilities accommodated with prior notification.