

AGRICULTURE & NATURAL RESOURCES

# Carlisle County ANR Newsletter July, 2016

Cooperative  
Extension Service  
Carlisle County  
P. O. Box 518  
Bardwell, KY 42023  
(270) 628-5458  
Fax: (270) 628-3722  
[www.ca.uky.edu/ces](http://www.ca.uky.edu/ces)

## The Agriculture Development Board –CAIP Program Timeline

**County CAIP** programs open **June 24-July 22, 2016**. All ten areas will be open and available to apply for. Primary areas will be \$5000.00. Secondary programs will be \$2500.00. A total of \$90,000.00 will be spent on these areas if enough applications come in. Here are the **Primary areas**: Large Animal (beef, dairy, equine), Farm Infrastructure, Fencing & On-Farm Water, Forage & Grain Improvement, Poultry & other Fowl, Technology & Leadership Development. The **Secondary areas** are: Agricultural Diversification, Animal Small (goat, sheep, bee, rabbits) On- Farm Energy, Value-Added & Marketing.

MONEY FOR FARM  
IMPROVEMENTS AVAILABLE...

**KADF**  
KENTUCKY AGRICULTURAL  
DEVELOPMENT FUND

**Carlisle County Conservation**

140 State Route 123. STE C  
Bardwell, KY  
270-628-3709  
[CCCD@windstream.net](mailto:CCCD@windstream.net)

*All applications are scored, based on the scoring criteria set by the Kentucky Agricultural Development Board.*

### COUNTY AGRICULTURAL INVESTMENT PROGRAM (CAIP)

Applications will be available for Carlisle County's CAIP to assist farmers in making important on-farm investments.

**Application Period:**

June 24, - July 22, 2016  
*No applications will be accepted after*

**Application Availability:**

Carlisle County Conservation Office  
Monday- Wednesday – Friday  
(8 a.m. – 4:30 p.m.)

**For More Information:**

Contact Kendra Jeffords at 270-628-3709 or email [cccd@windstream.net](mailto:cccd@windstream.net)



29<sup>th</sup> Milan No-Till  
Crop Production  
Field Day  
Thursday, July 28, 2016  
7:00 a.m. - 2:00 p.m.

North Tract of the  
AgResearch and Education  
Center at Milan  
Milan, Tennessee



**OTHER DATES TO REMEMBER:**

**July 4- Independence Day- Extension Office is closed**

**July 28 – UK Corn, Soybean and Tobacco Field Day-  
Princeton-8:00 a.m.**

**August 9- Fair Entries- Crop/Garden other -2-6 pm**



**August 11-13- Carlisle County Fair**

**August 17- Rinse and Return-with Lunch**

# FSA County Committee Nomination Period in Carlisle County Open June 15, 2016

The nomination period for the Carlisle FSA county committee begins on June 15, 2016. Nomination forms must be postmarked or received in the Carlisle County FSA Office by close of business on **Aug. 1, 2016**.

County Committees are unique to FSA and allow producers to have a voice on federal farm program implementation at the local level.

To be eligible to serve on the FSA county committee, a person must participate or cooperate in an agency administered program, be eligible to vote in a county committee election and reside in the Local Administrative Area (LAA) where they are nominated. All producers, including women, minority and beginning farmers and ranchers are encouraged to participate in the nomination and election process.

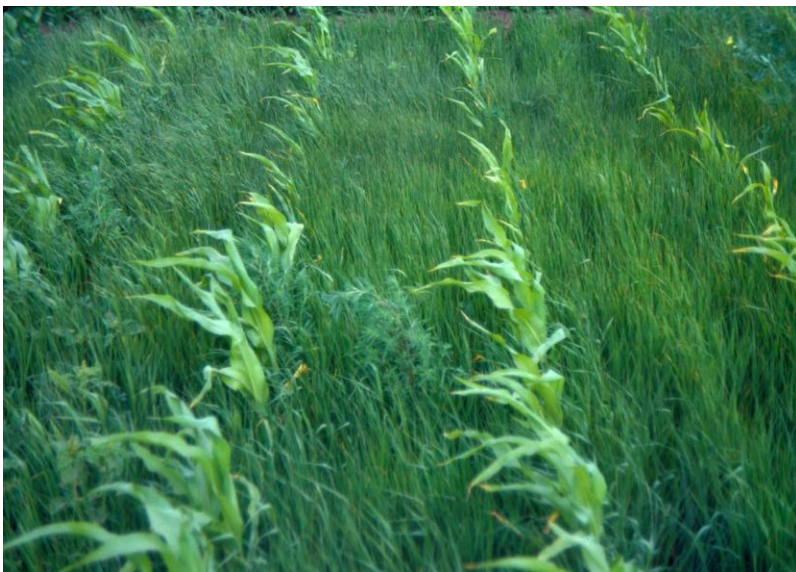
This year, nominations and elections will be held in LAA 2 which includes the central area of Carlisle County from the river to Graves County.

Producers may nominate themselves or others as candidates. Organizations representing minority and women farmers and ranchers may also nominate candidates. To become a nominee, eligible individuals must sign form FSA-669A. The form and more information about county committee elections is available online at: [www.fsa.usda.gov/elections](http://www.fsa.usda.gov/elections).

Elected county committee members serve a three-year term and are responsible for making decisions on FSA disaster, conservation, commodity and price support programs, as well as other important federal farm program issues. County committees consist of three to 11 members.

FSA will mail election ballots to eligible voters beginning Nov. 7. Ballots are due back in the Carlisle County FSA Office by mail or in person no later than Dec. 5, 2016. All newly elected county committee members and alternates will take office January 1, 2017.

For more information about county committees, please contact the Carlisle County FSA office at (270) 628-5453 or visit [www.fsa.usda.gov/elections](http://www.fsa.usda.gov/elections).



Sometimes we think we have problems!!!

Information released by



Chuck Flowers  
Carlisle County Extension Agent for  
Agriculture & Natural Resources

COOPERATIVE  
EXTENSION  
SERVICE



**Cooperative Extension Service**

*University of Kentucky  
Carlisle County  
P.O. Box 518,  
Bardwell, KY 42023-0518*

PRESORTED  
STANDARD  
US POSTAGE PAID  
BARDWELL, KY  
PERMIT 518

RETURN SERVICE REQUESTED